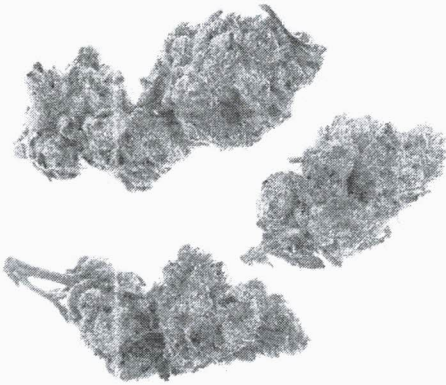




## Certificate of Analysis

For R&D Use Only - Not a California Compliance Certificate.

# Papaya Bomb



Total CBD	ND
Total THC	22.26 %
Total Cannabinoids	25.38 %

**Sample Name:**

Papaya Bomb

**Matrix:**

Plant

**Unit Mass:**

1 g per unit

**Sample ID:**

46540612-1

**Date Received:**

6/12/2024

Approved By:

Marie True, M.S.

Laboratory Manager

This certificate of analysis is responsible for the tested sample only and is for research and development (R&D) use only. This certificate of analysis shall not be reproduced, except in its entirety, without the written approval of FESA Labs. FESA Labs shall not be liable for any damage that may result from the data contained herein in any way. FESA Labs makes no claim to the efficacy, safety or other risks associated with any detected or non-detected amounts of any substances reported herein. If there are any questions with this report please email [info@fesalabs.com](mailto:info@fesalabs.com). This certificate of analysis is intended only for the use of the party to whom it is addressed and may contain information that is confidential or protected from disclosure under applicable law. If you have received this document in error, please immediately contact us.

**References:** limit of detection (LOD), limit of quantitation (LOQ), not detected (ND), not tested (NT)

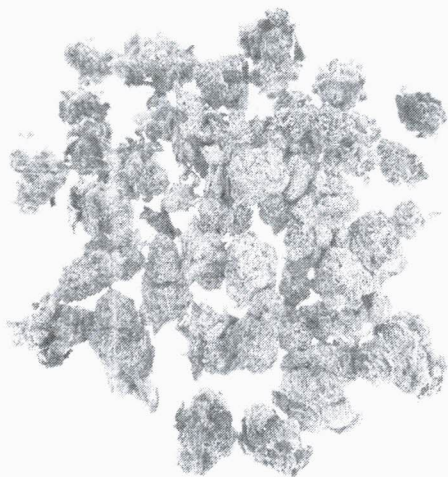
**FESA Labs**

2002 South Grand Avenue Suite A  
Santa Ana, CA 92705  
(714) 540-0172  
[www.fesalabs.com](http://www.fesalabs.com)

## Certificate of Analysis

For R&D Use Only - Not a California Compliance Certificate.

# Super Sonic



Total CBD	ND
Total THC	28.88 %
Total Cannabinoids	32.90 %

**Sample Name:**

Super Sonic

**Matrix:**

Plant

**Unit Mass:**

1 g per unit

**Sample ID:**

46540715-11

**Date Received:**

7/15/2024



Approved By:

Marie True, M.S.

Laboratory Manager

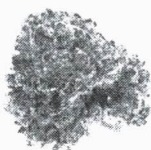
This certificate of analysis is responsible for the tested sample only and is for research and development (R&D) use only. This certificate of analysis shall not be reproduced, except in its entirety, without the written approval of FESA Labs. FESA Labs shall not be liable for any damage that may result from the data contained herein in any way. FESA Labs makes no claim to the efficacy, safety or other risks associated with any detected or non-detected amounts of any substances reported herein. If there are any questions with this report please email [info@fesalabs.com](mailto:info@fesalabs.com). This certificate of analysis is intended only for the use of the party to whom it is addressed and may contain information that is confidential or protected from disclosure under applicable law. If you have received this document in error, please immediately contact us.

**References:** limit of detection (LOD), limit of quantitation (LOQ), not detected (ND), not tested (NT)

## Certificate of Analysis

For R&D Use Only - Not a California Compliance Certificate.

# Gelato



Total CBD	ND
Total THC	25.09 %
Total Cannabinoids	28.59 %

**Sample Name:**

Gelato

**Matrix:**

Plant

**Unit Mass:**

1 g per unit

**Sample ID:**

46540116-7

**Date Received:**

1/16/2024



Approved By:

Marie True, M.S.

Laboratory Manager

This certificate of analysis is responsible for the tested sample only and is for research and development (R&D) use only. This certificate of analysis shall not be reproduced, except in its entirety, without the written approval of FESA Labs. FESA Labs shall not be liable for any damage that may result from the data contained herein in any way. FESA Labs makes no claim to the efficacy, safety or other risks associated with any detected or non-detected amounts of any substances reported herein. If there are any questions with this report please email [info@fesalabs.com](mailto:info@fesalabs.com). This certificate of analysis is intended only for the use of the party to whom it is addressed and may contain information that is confidential or protected from disclosure under applicable law. If you have received this document in error, please immediately contact us.

**References:** limit of detection (LOD), limit of quantitation (LOQ), not detected (ND), not tested (NT)